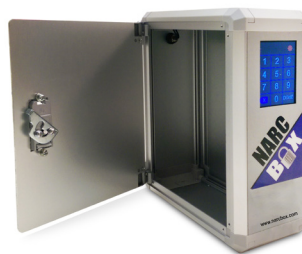


Narc Box™

Owners Manual & Warranty Information



800-445-3640 • Brandon@NarcBox.com



General Description

The Narc Box™ is a portable narcotic security system designed to keep controlled substances locked and secure while providing fast 5 digit PIN or RFID Badge access. Access information is saved and submitted via Wifi to a secure Narc Box™ server that is accessible to users through any internet enabled device.



Specifications

Internal Lithium Iron Phosphate Battery
Dimensions: 10" x 8" x 4"
Full color resistive touch screen: 340px x 320px
Weight: 3.5 lbs
Available with a 110V Power Cord or 12V Power Cord
1 Year Warranty
Optional Mounting Configurations: Vertical or Horizontal
Two power ports to accommodate different mounting configurations
Includes 5 RFID Badges

Accessories

110 Volt Power Cord, 36" (TTNARC652) \$29.99

12 Volt Power Cord, 36" (TTNARC655) \$29.99



(TTNARC652)

RFID Badge (TTNARC656) \$50.00
3 cards.



(TTNARC656)

Replacement Internal Battery (TTNARC657) \$100.00

Operating Instructions

Powering the Narc Box™

A 36 inch 110v power cord is provided with each Narc Box™. The Narc Box comes with two power ports to accommodate different mounting configurations. (#1, figure 1)

NOTE: The Narc Box™ is automatically powered “on” when plugged in. There is no on/off switch. It runs continuously.



Figure 1

To open the Narc Box

Once the Narc Box is plugged in, press anywhere on the logo screen (#2, figure 2) and the settings screen will appear. (See figure 3)

Prior to visiting www.narcbox.com and completing the registration process, the user can enter the 5 digit PIN # 0,1,2,3,4 as a temporary PIN. This PIN allows the user to open the box and obtain the serial number. This PIN # is temporary and will not be valid once users have been added and the box is synced.

If the correct PIN has been entered the lock will disengage. (#3, figure 2) The box is now unlocked.

The un-lock symbol will appear in the upper left hand corner of the screen. An open lock symbol will flash white and yellow. (Figure 3)

5 seconds is allowed to open the door. If not opened in 5 seconds it will lock.

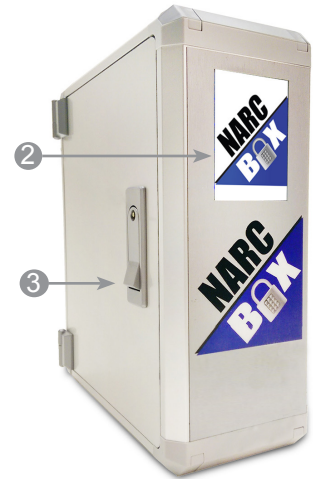




Figure 2

  The Lock Icon with the green background flashes white and blue when the door is secure has been closed and locked.

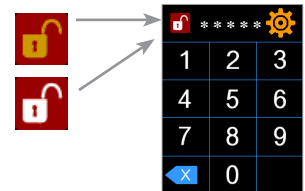


Figure 3

Press firmly on the bottom of the lock tab. (See figure 4) The door is unlocked. The door will open when the lock is in the open position. (See figure 5)

To close & lock the door make sure the lock is in the open position, (See figure 5) close the door and then press in the top of the lock tab. This locks the door.



Figure 4



Figure 5

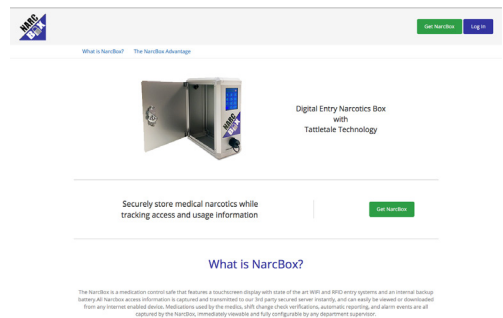
Narc Box™ Account Setup

To setup or access your online account with Narc Box™ visit:

www.narcbox.com.

Once you have purchased the Narc Box, click on the blue Login button and follow the online directions to set up your account. Click on “Create an Account” & follow online directions to set up your account.

An active account is necessary to add and manage your admin/supervisors, paramedic/employees, Narc Boxes, sync to Wifi and configure reporting options.



Web Reporting Options

The Narc Box account allows for multiple reporting options:

By Paramedic/Employee

By Narc Box

By Station

By Vehicle

or a Master Activity Report.

All of these reports can be found under the “Reporting” tab to the left side of the screen. Users must be logged in to their account to access the report menu.

Settings - Adjust your system settings

System Settings can be accessed by logging in to your account and clicking “Settings” on the left of the screen.

General:

Require dual PINs for NarcBox entry.

(When activated, two different PINs or RFID scans need to be entered for entry.)

Medications:

(When activated allow tracking of narcotics used on a call.)

Email Notifications:

Unauthorized entry to any NarcBox

Any NarcBox is left open for more than 15 minutes

3 or more consecutive failed entry attempts

Automated Reporting Frequency:

Disabled

Upon Occurrence

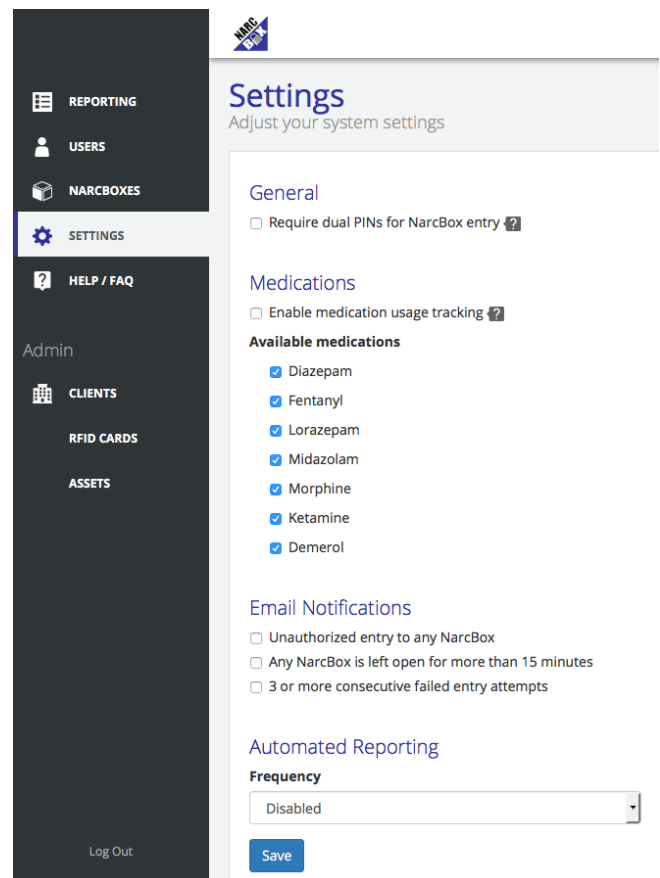
Every 12 hours

Every 24 hours

Every 48 hours

Weekly

Click “Save” to save all settings.



Mounting Options

The Narc Box™ can be easily vehicle mounted, either vertically or horizontally, to save space and accommodate virtually any cabinet configuration.

Step 1.

Choose the panel(s) that will work best for your specific mounting needs.

Step 2.

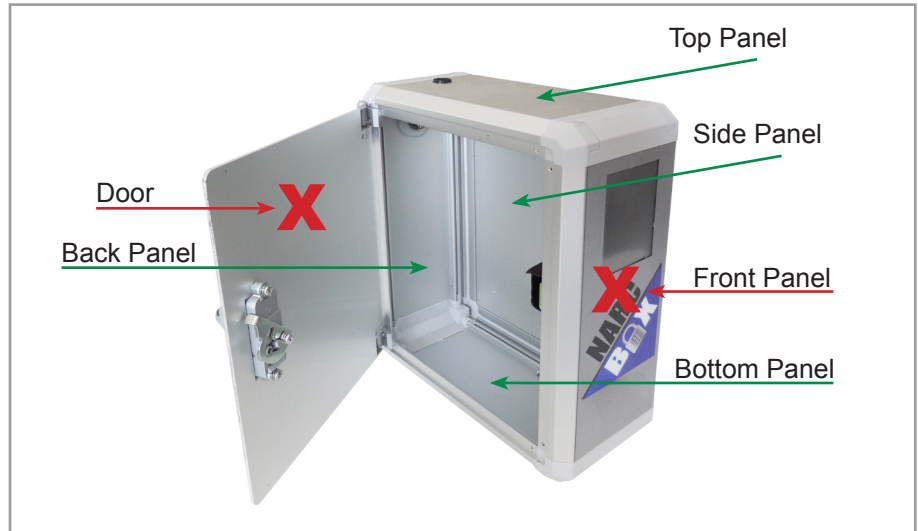
Mark the hole(s) as close to the middle of the panel as possible. If using more than one screw to mount the Narc Box be sure to avoid the power ports and wiring.

Step 3.

Complete the drilling of the panel on the narc box and mount to the desired location.



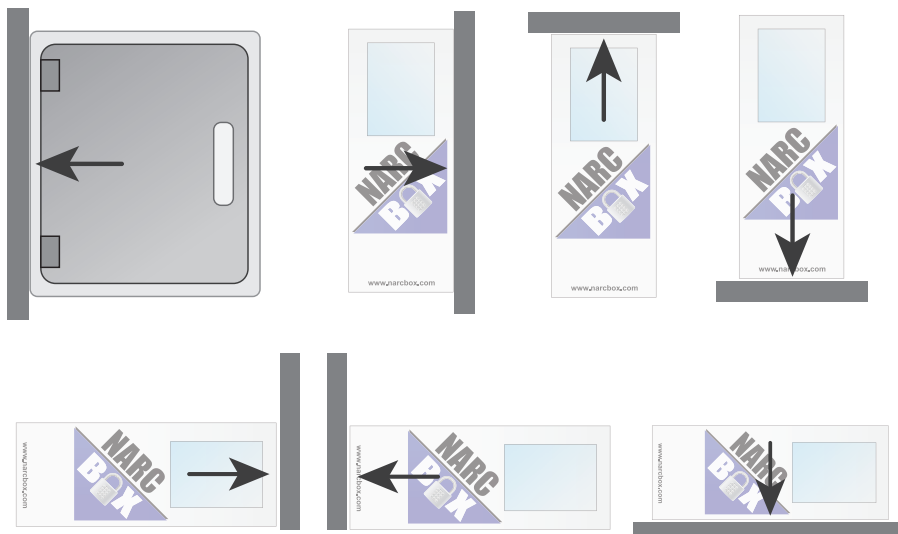
- ✓ Panels designated for mounting: Top Panel, Bottom Panel, Back Panel, Side Panel (opposite the door).
- ✗ Panels not designated for mounting: Front Panel (with electronics), Door



! Power Ports are located on the top panel and back panel of the Narc Box. When choosing the correct mounting location for the Narc Box be sure to leave adequate room for use of at least one of the power ports.



Mounting Options



Description of Symbols Reference



Settings Icon

Access to:
Systems Info, Wifi, Sync and Rotate Screen



Green Wifi Icon

Indicates a good connection to Wifi.



Red Wifi Icon

Indicates there is no connection to Wifi.



Locked Icon

Indicates that the lock on the Narc Box™ is in the locked position. The lock flashes white and blue.



Un-locked Icon

Indicates that the lock on the Narc Box™ is in the un-locked position. The lock flashes white and yellow.



Wait Icon

Indicates that the Narc Box™ is processing.



Sync Icon

Indicates that the Narc Box™ is attempting to sync with the server.



X Icon

Indicates entering an incorrect PIN number. Also indicates a failed sync attempt.



Check Icon

Checkmark on sync indicates a successful sync.

Warranty

Narc-Box™ Case Warranty

Thomas EMS warrants that for a period of 1 (one) year from the date of purchase, this product will be free from defects in material and workmanship. Thomas EMS, at its option, will repair or replace this product or any component of the product found to be defective during the warranty period. Replacement will be made with a new or remanufactured product or component.

This warranty does not cover normal wear of parts or damage resulting from any of the following: negligent use or misuse of the product, use on improper voltage or current, disassembly, repair or alteration by anyone other than Thomas EMS. Further, the warranty does not cover: Acts of God, such as fire, flood, hurricanes and tornadoes.

Thomas EMS shall not be liable for any damages of any kind resulting from the purchase, use or misuse of, or inability to use the product including incidental, special, consequential or similar damages or loss of profits, or for any breach of contract, fundamental or otherwise, or for any claim brought against purchaser by any other party regardless of their kind and nature.

NON-TRANSFERABLE